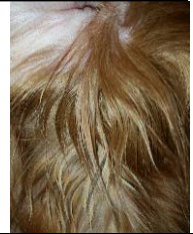




GREASY SKIN & COAT

Issue:

Greasy Skin & Coat



Severity Level:	Nature's Specialties Shampoo & Conditioner Suggestions:	Tool Recommendations:
Severe	<ul style="list-style-type: none">Tar & Sulfur Shampoo (not safe for cats) or Citrus ShampooMust follow with Coat Conditioner	<ul style="list-style-type: none">Rubber curry (soft or coarse)Stripping or carding knifeSuper Absorbent TowelBrush (harsh or soft depending on coat)Comb (fine, medium, coarse)
Medium	<ul style="list-style-type: none">Tar & Sulfur Shampoo (not safe for cats) or Citrus ShampooMust follow with Coat Conditioner	
Mild	<ul style="list-style-type: none">Tar & Sulfur Shampoo (not safe for cats) or Citrus ShampooMust follow with Coat Conditioner	

How to Use the Products:

Step 1	Use a mixing bottle and dilute as per the instructions on the bottle. For the most severe cases, do not dilute.
Step 2	For best results, apply directly to the dry coat. Massage the diluted shampoo gently onto the coat, make sure to apply the product to all parts of the animal including the armpits, between toes, stomach, and other hard to reach places (do not put in eyes, mouth or ears).
Step 3	Let the product sit on the coat for at least 10 minutes before rinsing. During this time, you can use a rubber curry to massage the product into the skin and coat.
Step 4	Rinse thoroughly and repeat these steps using conditioner. Only dilute the product directly before using. These products are biodegradable after water is added.
Step 5	Once the bathing process is finished, use a super absorbent towel to dry the pet. It is important to dry the pet as well as possible, including between the toes, under arms, etc.
Step 6	Once the pet is dry, it is optional to use a stripping or carding knife to promote healthy hair growth in most double-coated breeds.
Step 7	It is important to brush and comb your pet between baths to help the skin breath. It is recommended to use the appropriate brush depending on the thickness and condition of the coat and skin.
Step 8	After you brush, use a comb to take out tangles and excess coat. Use a fine comb for dogs with thin coats and skin, use a medium to coarse comb for thicker coats.



Important information & tips:

- In severe cases, it is recommended to bathe the pet once a week for 6 weeks, if progress is seen you can cut down to twice a month, and eventually every 2 months.
- It is important to ensure that you are not irritating the skin when you are brushing and combing. If you notice the skin is becoming pink, you should stop.
- Even though your shampoo, conditioner or optimizer may be considered tearless, you should avoid getting any product in your pet's eyes.

Disclaimer:

This information is Lynn Professional's suggestions and recommendations and is for informational purposes only and should not be considered to be healthcare advice, veterinary or medical diagnosis, treatment or prescribing of any kind. Additionally, none of this information should be considered a promise of benefits, a claim of cures, a legal warranty or a guarantee of results to be achieved. This information is not intended as a substitute for advice from your pet's veterinarian or any other healthcare provider. You should not use this information for diagnosis or treatment of any disease, condition or health problem or for prescription of any medication, supplement or other treatment for your pet, yourself or any other person or animal. You should consult with a veterinarian before altering or discontinuing any of your pet's current medications, treatment or care. You should also check with your pet's veterinarian if you have or suspect he or she might have a health problem.

Lynn Professional Pet Grooming Supplies

Local: 204-487-3908

Toll Free: 866-266-2543

Email: info@lynnprofessional.com

Website: www.lynnprofessional.com

All products can be purchased online at www.lynnprofessional.com